



C
V
COMPANY
PROFILE

The cover features a textured, brownish-gold background with a faint architectural drawing of a large building. The letters 'C' and 'V' are large and white, partially overlapping the drawing. The words 'COMPANY' and 'PROFILE' are stacked in a smaller, white, serif font.

RAPPOPORT PTY LTD - HERITAGE CONSULTANTS



CONSERVATION ARCHITECTS & HERITAGE CONSULTANTS

PAUL RAPPOPORT - QUALIFICATIONS

Paul Rappoport, B. Arch., MURP, RAIA, M. ICOMOS
Director
Registered Architect (RAIA) - 1993 - No. 5741
Masters in Urban & Regional Planning - 2008 - USYD
Bachelor of Architecture - 1984 - UCT
Bachelor of Architectural Studies - 1982 - UCT

PROFILE

Paul Rappoport has been the company director of Rappoport Pty Ltd since 1994. The firm currently employs 5 staff and works with consultants including; historians, archaeologists; interior designers and drafts people to undertake work on a range of heritage projects. Rappoport maintains a regular list of clients who have interests throughout New South Wales. The firm deals with private developers, local Councils, the Heritage Branch of the Department of Planning (NSW) and Commonwealth Govt Departments. The firm undertakes work on locally listed, State heritage listed and Commonwealth / National heritage-listed properties. Paul is a regular participant on the local and international lecture circuit - speaking widely on heritage matters. He is affiliated with most of the major universities in New South Wales.

MEMBERSHIPS

Registered Architect No. 5741 - NSW Architects Registration Board
Member of Society of Architectural Historians - SAHANZ
Member of Historic Houses Trust NSW
Member of ICOMOS Australia
Member of International Planning History Society - IPHS

SERVICES

Heritage Impact Statements
Conservation Management Plans
Photographic Archival Records
Movable Heritage Inventories
Interpretation Strategies & Plans
Research and writing on a wide range of conservation topics
Heritage Fabric Analysis
Specifications for heritage buildings
Scheduling of repairs to heritage buildings
On site heritage architect during construction
Heritage Advice to architects and designers
Expert witnessing reports for the Land and Environment Court of NSW
Lecturing on a wide range of heritage topics



Collingwood House - Liverpool



Emmanuel School - Randwick



Mortuary Station - Sydney



Briscoe Building - Ultimo

CONSERVATION MANAGEMENT PLANS

SPEAKING ENGAGEMENTS

Paul Rappoport, representing the firm, has presented at a number of conferences on various heritage topics at both local and international venues as follows;

- IPHS (International Planning History Society) Istanbul, Turkey - Heritage Conference - 2010
- Architectural Axis - 2008, 2009 and 2010
- USYD Heritage Planning Law - annual Lecture 2007 - 2010
- NEERG SEMINARS - organised by Neustein Urban 2007, 2008 and 2009
- Spotless Heritage Induction - 2009
- UNSW Planning Department - 2009
- IPHS (International Planning History Society) Chicago, USA - Heritage Conference - 2008
- Canberra ICOMOS - 2008
- UTS - Department of Architecture & Building - 2008
- UTS - 4Rs Conference - 2008
- Interpretation Australia - 2007
- Montreal, Canada - ICOMOS Heritage Conference - 2007
- Professional Historian's Association - 2006
- Australian Institute of Architects (AIA) - 2005

EXPERIENCE & SKILLS

Paul's experience and expertise extends to;

- Understanding the physical condition of heritage buildings
- Being able to specify the repairs and conservation methodology required for heritage buildings
- Being able to set out long-term conservation policies for the maintenance of heritage buildings
- Being able to advise clients on proposed new work in relation to heritage buildings and solutions to mitigate impact
- Being able to participate in design development meetings to identify and deal with significance issues in relation to heritage buildings, their setting and curtilage
- Being able to produce conservation management and maintenance plans for heritage buildings and precincts
- Being able to prepare heritage impact statements for heritage buildings based on identifiable scopes of work
- Being able to apply the Burra Charter to all heritage projects
- Being able to devise interpretation strategies for heritage buildings and precincts
- Preparation of expert evidence for the Land & Environment court hearings
- Evaluation of tenders for heritage projects
- Liaison with heritage approved authorities such as Councils, Certifiers and State Government



Eric Pratten House - Pymble



Bidura House - Glebe



Victoria Bridge - Penrith



No.1 Hickson Road - The Rocks

HERITAGE IMPACT STATEMENTS

CLIENTELE

CLIENTELE

Rappoport's clientele includes;

CORPORATIONS such as BHP Billiton; Australian Broadcasting Corporation; Telstra; Vodafone; Optus; Commonwealth Banking Australia; AMP

GOVERNMENT AGENCIES such as Defence Housing Authority (CTH); Department of Defence; SRA, RailCorp; RTA; Energy Australia; Sydney Ferries; NSW Department of Education; NSW Department of Public Works & Services; State Property Authorities; Sydney Harbour Foreshore Authority; Landcom

ENGINEERING CONSULTANTS such as GHD; Meinhardt; Coffey; Biosis

ECCLESIASTICAL such as Uniting Church in Australia; Department of Catholic Education; Presbyterian Church of Australia; Greek Orthodox Archdiocese of Australia; Coptic Orthodox Church of Australia; Emanuel School

COUNCILS such as Hurstville City Council; Wingecarribee Shire Council; Wagga Wagga City Council; Botany City Council; Liverpool City Council; Leichhardt Municipal Council; Holroyd City Council; Strathfield Council; Warringah Council; Council of the City of Sydney; Newcastle City Council; Blacktown City Council

CONSTRUCTION FIRMS such as Brookfield Multiplex; Leightons; Lend Lease; Kell & Rigby; Baulderstone Hornibrook; Belmadar Constructions; CSR

LAW FIRMS such as Minter Ellisons; Bartier Perry; Blake Dawson Waldron; Clayton Utz; Colin Biggers & Paisley; Phillips Fox; Wilshire Webb Staunton Beattie Lawyers

ARCHITECTURAL & PLANNING FIRMS: The majority of Rappoport's clients are drawn from various architectural and town planning firms in New South Wales. The majority of the reports constitute a mixture of commercial, residential, industrial and institutional projects.

HERITAGE ARCHITECTURE & PLANNING

Qualified & Registered Architect

Qualified Town Planner

Advisor to numerous NSW councils

Advisor to numerous architectural firms

Advisor to numerous town planning firms

Advisor to numerous government agencies

EXPERT WITNESS

Since 1998, Paul has undertaken the role of expert witness in the Land & Environment Court of NSW in the capacity both as a court appointed expert and heritage advisor. Many documented judgments contain opinions demonstrated by Paul on a wide range of heritage issues.



Paramount Studios - Surry Hills



Soldiers Memorial Hall - Liverpool



Quong Tart House - Ashfield



Durban City Hall - South Africa

HERITAGE INTERPRETATION STRATEGIES

RESIDENTIAL HERITAGE PROJECTS

Numerous Heritage Impact Statements for residential properties in the Sydney metropolitan area and outlying suburbs - some including Sydney's Northern Suburbs, Eastern Suburbs, Southern Suburbs, South-Western Suburbs, Western Suburbs, Inner Western suburbs, the Hunter Valley, Northern Beaches, Wollongong, Muswellbrook and the Blue Mountains.

Design advice and preparation of Development Application submissions to various Councils.

Architectural drawings and contract administration on heritage listed properties in New South Wales, such as the last two remaining original terrace houses in Macquarie Street, Sydney; and state-listed homes - Eric Pratten House" by Walter Burley Griffin at Pymble; and "Babworth House" for Anthony Hordern, at Darling Point

New House at Lloyd Avenue - Hunters Hill
Modifications to Block of flats at Bates Avenue - Paddington
Major renovations to House at Stanley Avenue - Mosman
Major renovations to House at Bermuda Place - Woolooware
Additions to Terrace at Forbes Street - Newtown
Major renovations to House at Doris Hirst Place - West Pennant Hills
Landscape Works to The Homestead - Chipping Norton
Modifications to House at Wolseley Road - Point Piper (First Point)
Modifications to Houses at Wolseley Crescent - Point Piper (Blainey North)
Major renovations to House at Kent Street - Rose Bay (Harry Levine)
Major renovations to George Frost House - Kincumber (Tony Tuxworth)
Modifications to House at Windmill Street - Millers Point (Blackmore Design Group)
Landscape Works to Dalton House, Calvary Retirement Village - Ryde
New Residential and retail development at Goldsmith Place - Katoomba

(Adriaan Winton Architect))
Draft DCP for Babworth House - Darling Point (Conybeare Morrison)
New Housing development - Johnson Street - Annandale (Scott Carver)
Stabilisation Works at Collingwood House, Birkdale Crescent - Liverpool (Liverpool City Council)
Millers Point Housing Upgrade Works (Spotless/Housing NSW)
Glebe Housing Upgrade Works (Spotless/Housing NSW)
New Residential Flat Buildings at Avon Road - Pymble (AMW Architects)
Major renovations to House at Edward Street - Woollahra (AMW Architects)
Modifications to House at Balfour Road - Kensington (Client/Owner)
Staircase at Residential Flat Building at St Neots Avenue - Potts Point
Modifications to House at Chelmsford Avenue - Croydon
Major renovations to House at Whyte Place - Camden
Major renovations to House at First Avenue - Seven Hills
Modifications to House at Hewlett Street - Granville
Major renovations to House at Myall Street - Croydon West
Modifications to House at Appian Way - Burwood
Demolition of House at Ponsonby Parade - Seaforth
Major renovations to House at Campbell Street - Balmain
Major renovations to House at Brentwood Avenue - Warrawee
Seawall Modifications to House at Billyard Avenue - Elizabeth Bay
Internal Modifications to House at Clifton Avenue - Croydon
Internal Modifications House at Henley Street - Balmain
Major renovations to House at Carr Street - Waverton
Internal Modifications to Terrace House at Walker Street - North Sydney
New House at Dougherty Street - Rosebery
Modifications to House at Macarthur Street - Ultimo
Minor Modification to Terrace Houses at Glebe Point Road - Glebe
Major renovations to House at Bradleys Head Road - Mosman
Major renovations to House at Grosvenor Street - Wahroonga



Galvin Cottage - Springfarm



Dion Building - Wollongong



Ponsonby Pde - Seaforth



The Gaff - Darlinghurst

EXPERT HERITAGE ADVICE

RESIDENTIAL HERITAGE PROJECTS CONTINUED

Major renovations to House at Old South Head Road – Bondi Junction
House at Mowbray Road – Chatswood
Major renovations to House at Annandale Street – Annandale
House at Hawkesbury Road – Winmalee
House at Abbey Street – Hunters Hill
House at Abbotsford Road – Strathfield
New Works in the Carthona House Estate – Darling Point
Internal Modifications House at Clifton Road – Woolwich
New Building adjacent to Denfield Villa – Tahmoor
Demolition of House at Hansens Road – Minto Heights
Internal Modifications to Everton – Faulconbridge
Major Conservation Works to The Hermitage – Denistone
General attendance to Repairs for Houses in Jones Street – Pyrmont (Spotless/ Housing NSW)
New Additions to Withycombe – Mount Wilson
Interior Modifications to Whitley, Oldbury Road – Moss Vale
Minor Works to Simpson Cottage - Bundeena

COMMERCIAL HERITAGE PROJECTS

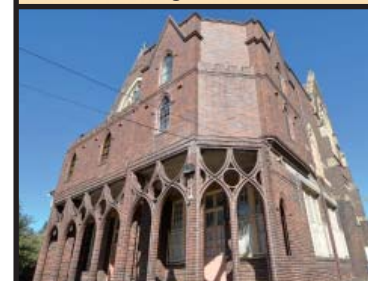
Minter Ellison Building, Martin Place – Sydney (Lend Lease)
Commonwealth Bank, 44 Market Street - Sydney
Grace Bros. Broadway (Multiplex)
44 Manning Street - Kiama (Parker Logam Development)
17 George Street - Parramatta (Nynam Gibson Stewart Solicitors)
The Hub, King Street - Newtown (Maurice Beraldo Architect)
Daily Telegraph Building, 147 King Street - Sydney (Ashington Group)
Banking House - 225 Pitt Street - Sydney (Metro D Architects)
The National Building - 250 Pitt Street - Sydney (Ashington Group)
Pensione - 631 - 635 George Street - Sydney (Metro D Architects)
53 Martin Place - Sydney (Marshall Investments)
Dion Building - Kiera & Smith Streets - Wollongong (ADM Architects)
Paramount Studios - Brisbane Street - Surry Hills (Fox Johnston Architects)
Quong Tart's Home, Arthur Street - Ashfield (Uniting Church in Australia)
360 Pitt Street - Sydney (Robinson Marks Architects)
Parramatta Fire Station - Church Street - Parramatta (Becton Property Group)
28 Chalmers Street - Surry Hills (Butler and Co Architects)
100 George Street - The Rocks (SHFA)
2 Campbell Parade - Bondi Beach (Marchese & Partners)
Watters Gallery, Riley Street - East Sydney (Walter Barda Design Pty Ltd)
Sharpies Golf Sign - Elizabeth Street, Sydney (PTI Architects)
Bandstand Café - Darlinghurst (Ark Design)
330 Wattle Street - Ultimo (Nigel Parsons Architect)
28 Clarke Street - Crows Nest (GSA Architects)
Goldsmith Place - Katoomba (Adriaan Winton Architect)
The Chubb Factory - 830 Elizabeth Street - Waterloo (Marshall Investments)
152-158 Remembrance Drive - Tahmoor (Mark Hurcum Design Practice)
15-23 The Corso - Manly (Blackmore Design Group)
AMP Building, Circular Quay - Sydney (Sydney Ferries)
76 Crown Street, Wollongong (BHI Architects)



Uniting Church – Woodford, Blue Mountains



Briscoe Building – Ultimo



OLSH Primary Campus – Randwick



Royal Hotel – Paddington

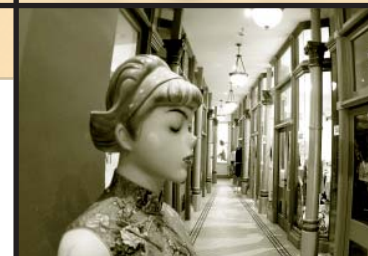
CONSERVATION ARCHITECTS

COMMERCIAL HERITAGE PROJECTS CONTINUED

Mandarin Club - Pitt Street - Sydney (BHI Architects)
Base Backpackers - 469 Kent Street - Sydney
868 Military Road - Mosman
The Rocks Centre - The Rocks (Kane Constructions)
Pancakes on the Rocks, Metcalf Bond Stores, Hickson Street - The Rocks
1 Hickson Road - The Rocks (SHFA)
Hurstville Streetscape Study - Hurstville (Hurstville Council)
Royal Naval House, Gloucester Street - Sydney (Cadence Project Managers)
Federation Hall, Gloucester Street - Sydney (Cadence Project Managers)
Bogota Cafe - 948 Botany Road - Mascot (Bogota Coffee)
KFC, 762 George Street - Sydney (Maurice Beraldo Architect)
Mr Espresso Retail Café, 1135 Botany Road - Mascot
Hungry Jacks - Circular Quay - Sydney (Maurice Beraldo Architect)
Church Point Post Office & General Store, Pittwater Road - Church Point
Charlie Chans - 631 George Street - Sydney (Metro D Architects)
Grill Boathouse, 44 Lower Serpentine Rd - Greenwich (Infinity Constructions Group Pty Ltd)
Katoomba Flight Centre, 127 Katoomba St - Katoomba (Flight Centres)
Chemist - 1417 Botany Road - Botany
Cronulla Post Office - Cronulla
Soul Pattinson Pharmacy - 160 Pitt Street - Sydney (PCG Architects)
Capitol Centre Kiosks - Haymarket - Sydney (Metro D Architects)
16a Hickson Road - Dawes Point - Sydney
The Corso, 15-23 - Manly (Blackmore Design Group)
50 York Street - Sydney

INSTITUTIONAL HERITAGE PROJECTS

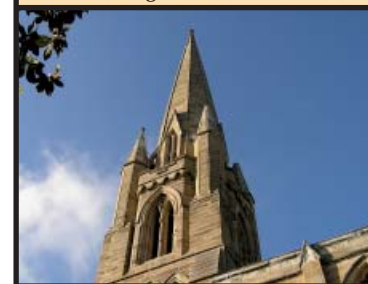
Australian Broadcasting Corporation, Gore Hill (ABC)
Durban City Hall, South Africa (Durban City Council)
Newcastle Town Hall (Newcastle City Council)
Sydney Town Hall (Howard Tanner & Associates)
Lands Department Bridge Street - Sydney (DPWS)
Haymarket Library - George Street, Sydney (Howard Tanner & Associates)
Drummoyne Council Building Refurbishment (Paul Davies Pty Ltd)
Royal Naval House, Grosvenor Place - Sydney (Sydney Futures Exchange)
Federation House, Grosvenor Place - Sydney (Sydney Futures Exchange)
Former Brisbane Waters Council Bldg., Mann Street - Gosford (Scott Carver)
Electrical Substation, Hattersley Road - Banksia (Energy Australia)
Electrical Substation, Wentworth Avenue & Merchant Street - Mascot
Telecommunication Facility, Phillip Street - Marrickville (Energy Australia)
Allawah Electrical Substation - Banksia (Energy Australia)
Dr Pirie Centre, Bigge Street - Liverpool (Liverpool Council)
St Helens Community Centre, Glebe Point Road - Glebe (Brookfield Multiplex)
NSW Nurses Association, Australia Street - Camperdown (Angel Mahchut)
Annandale Town Hall - Johnston Street, Annandale (Leichhardt Council)
'The Manse' - The Avenue - Mt Druitt (Blacktown Council)
The Bondi Surf Bathers Life Saving Club - Bondi Beach (Bondi Surf Bathers Life Saving Club)
Dee Why Library, Pittwater Road - Dee Why (Warringah Shire Council)
Nowra Court House - Nowra (Artas Architects)
Communication Tower, Old Fort Road - Middle Head (Martin Cerny)
Eastern Suburbs Memorial Park Cemetery & Crematorium - Military Road - Matraville
Bidura House, Glebe Point Road - Glebe (DOCS)
New War Memorial - Bigge Park (Liverpool Council)
Bondi Pavilion - Bondi Beach (Waverley Council)



631 George Street - Sydney



The Hermitage - Denistone



Hunter Baillie Mem. Church - Annandale



Collingwood House - Liverpool

HERITAGE PLANNING ADVICE

INSTITUTIONAL HERITAGE PROJECTS CONTINUED

Petersham Hospice, Fort Street - Petersham
Cecil Hills Homestead (Liverpool City Council)
Salvation Army Oasis Youth Support Network, Crown Street - Surry Hills (Mark Hurcum Design Practice)
North Beach Bathers Pavilion - Wollongong (ADM Architects)
Graithwaite - Edward Street - North Sydney (TSA Management)
Liverpool Fire Station, Terminus Street - Liverpool (Mosca Pserras)
Cobar Police Station, Barton Street - Cobar (Artas Architects)
Burwood Police Station, Burleigh Street - Burwood - (Artas Architects)
Leichhardt Local Area Command - Leichhardt (Artas Architects)
Parramatta Fire Station - Public Art, Church Street - Parramatta (Becton Construction)
West Wallsend Fire Station, William Street - Holmesville (Barrelle Guirguis)
Mascot Fire Station, Coward Street - Mascot (Botany City Council)
Mrs Macquarie's Chair and Environs - Sydney Domain (DPWS)
Fraser Park Overhead Railway Bridge - Marrickville (State Rail Authority)
Haymarket Library - George Street - Sydney (Howard Tanner & Associates)
Newtown Police Station - Newtown (Artas Architects)
Raith - Campbelltown (State Property Authority)
Soldiers Memorial Hall - Gerringong (BHI Architects)
Soldiers Memorial Hall - Liverpool (Mosca Pserras Architects)
Customs House - Circular Quay - Sydney (Mills Gorman Architect)

DEFENCE AND CIVIL HERITAGE PROJECTS

Bldg.106, Richmond RAAF Base - Richmond (Meinhardt Engineers)
Victoria Barracks - Oxford Street - Paddington (GSA Architects)
Pyrmont Bridge - Pyrmont (Darling Harbour Authority)
Spectacle Island - Drummoyne (GHD)
Tempe Lands Remediation, Tempe (Marrickville Council)
Richmond House - Richmond RAAF Base (Defence Housing Australia)
The Officer's Mess - Building 1 RAAF Base - Glenbrook (Thomas & Coffey)
RTA Coal Mining Tunnels, George Booth Dr & Richmond Vale Rd - Kurri Kurri (RTA)
Pedestrian Bridge over Wentworth Road - Eastlakes (Eastlake Golf Club)
Great Western Highway Road Widening - Wentworth Falls (GHD/RTA)
Menangle Park West, Sand & Soil Extractions (Landcom)
Port Kembla Administration Centre - Port Kembla (ADM Architects)
Tahmoor and Thirlmere - Longwall Mining - Impact on Town Centre and Suburbs
Munitions Factory, Anne Street - St Marys (BAC Designs)
North Reef Lighthouse - Great Barrier Reef
Sydney Harbour Bridge - Telecommunications (Vodafone, Telstra and Optus)

EDUCATIONAL HERITAGE PROJECTS

Hunter Baillie Memorial Presbyterian Church, Johnson Street - Annandale
St Andrews Cathedral - Sydney (Paul Davies Pty Ltd)
Uniting Church - Artarmon (JDH Architects)
Uniting Church, Great Western Highway - Woodford (Adriaan Winton)
St Abraam & Mickhail Al-Behairy Church, Forrest Road, Peakhurst (St Abraham Synod)
St Matthews Church Rectory, Eurobin Avenue - Manly (du Plessis Architects)



Bermuda Place - Woollooware



Varroville Outbuildings - Campbelltown



Salvation Army Hall - Sydney



Bondi Pavillion - Bondi Beach

SPECIFICATIONS FOR HERITAGE BUILDINGS

EDUCATIONAL HERITAGE PROJECTS CONTINUED

St Vincents, 50 Francis Street – Darlinghurst (Robertson Marks Architects)
St Ambrose, Stuart Street – Concord West (Quinn O Hanlon Architect)
St Francis, Oxford Street – Paddington (JDH Architects)
St Marys, Parramatta Road - Concord (Quinn O Hanlon Architect)
St Augustine, Balmain (David Morgan Architect)
St Josephs, Rozelle (David Morgan Architect)
Mortuary Station, Regent Street - Sydney (State Rail Authority)
Eastern Suburbs Memorial Park Cemetery – Matraville (ESMP)
Lisarow Cemetery - Lisarow

INDUSTRIAL HERITAGE PROJECTS

Sydney Grammar School, College Street – Sydney (Howard Tanner)
Department of Education Bldg, Bridge Street – Sydney (DPWS)
St Ambrose Primary School - Concord West (Quinn O Hanlon Architects)
St Mary's Primary School - Concord (Quinn O Hanlon Architects)
Marcus Clarke Building - Broadway (DPWS & TAFE)
St. Johns College - University of Sydney (Quinn O Hanlon Architects)
Newcastle TAFE - Tighes Hill (Belmadar Constructions)
Knox Preparatory School, Pacific Highway – Wahroonga (Sandrick Projects)
Ravenswood Girls School, Cecil Street – Gordon (Sandrick Projects)
St Scholastica's College, Avenue Road – Glebe (Thompson Adsett)
Sydney Community College (Ray Fitz-Gibbon & Associates Pty Ltd)
St Raphael's Primary School - South Hurstville (JDH Architects)
Fr John Therry Catholic School – Balmain (JDH Architects)
St Francis School, Oxford Street – Paddington (JDH Architects)
Santa Sabina College – Strathfield (JDH Architects)
Camden High School Redevelopment Site - Camden (Playhurst Churcher)
Liverpool Boys and Liverpool Girls High School – Liverpool (Trevor Howse)

Moss Vale Public School – Moss Vale (Trevor Howse & Assoc)
Coogee Preparatory Boys School, Alison Road – Randwick (BHI Architects)
Greenwell Point Public School – Greenwell Point (Trevor Howse & Assoc)
Muralan Public School – Muralan (Trevor Howse & Assoc)
Goulburn Public School – Goulburn (Trevor Howse & Assoc)
Ultimo Childcare Centre, Bullwara Road – Ultimo (Brookfield Multiplex)
Lidcombe Public School, Mills street – Lidcombe – (Lidcombe Public School)
Knox Grammar Boarding Precinct, Woodville Road – Wahroonga (Sandrick Projects)
SCEGGS School Site, Suttor Road – Moss Vale (Leo Campbell Architect)
CFK Childcare, Parkholme Road – Englorie Park (Tony Tuxworth Coastplan)
Little Sails Pre School, Crawford Road – Brighton Le Sands (Little Sails Pre School)
Essington Christian Academy - Bridge Road, Westmead (Essington Christian Academy)
Cheltenham Girls High School, Beecroft Road – Beecroft (Cheltenham Girls High School)
Childcare Centre, Our Lady of the Sacred Heart, Avoca Street – Randwick
Childcare Centre, Mowbray Road - Chatswood (JDH Architects)
Childcare Centre, 635 Military Road – Mosman (Grant Fortey Architects)
Emmanuel School, Stanley Street – Randwick (Emmanuel School)



Eastern Suburbs Cemetery - Matraville



Administration Centre – Port Kembla



Mascot Inn – Mascot



St Francis School – Paddington

DETAILING OF HERITAGE BUILDINGS

TRANSPORT HERITAGE PROJECTS

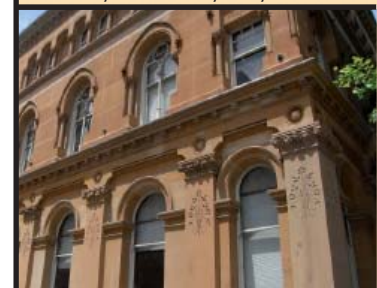
Railway Station – Linden, Blue Mountains (State Rail Authority)
Railway Station – Meadlow Baths, Blue Mountains (State Rail Authority)
Wentworth Falls Station – Blue Mountains (State Rail Authority)
Central Station Major Upgrade Works, Eddy Avenue - Sydney (DPWS)
Chief Mechanical Engineers Building - Eveleigh Railway Workshops (Caldis Cook Architects)
Railway Station - Dubbo (DPWS)
Railway Station - Mulgrave (for State Rail Authority)
Railway Station - Lidcombe (Paul Davies Pty Ltd)
Railway Station - Scone (State Rail Authority);
Station Master's Residence - Tamworth (State Rail Authority)
Great Western Highway Road Widening - Wentworth Falls (GHD)
Station Masters Residences, Gosport & Morton Streets - Moree (RTA)
Manly Wharf Gatehouse – Manly (Sydney Ferries)
CBD Metro – Rozelle (Leichhardt Council)
Station Masters Residence, Brompton Road - Bellambi (ADM Architects)
Hampden Bridge - Wagga Wagga (Wagga Wagga Council)
Maritime Centre - Port Kembla (ADM Architects)
Tram Shelter, Pittwater Road – Manly (Warringah Shire Council)
Victoria Bridge Pipeline – Great Western Highway - Emu Plains (Northern Group)
Former Tram Depot, Pittwater Road – Manly (Harris Farm Fruiterers)
Former Ticket Office, Blackheath Station, Great Western Highway – Blackheath (Phillip Ruse)
Circular Quay Station – Circular Quay
Railway Station – Austinmer (CPS Global)

HOTELS AND TOURISM HERITAGE PROJECTS

Red Tomato Inn, Anzac Pde – Kensington (Caldis Cook Architects);
Paddington RSL, Oxford Street – Paddington (Caldis Cook Architects);
Parramatta RSL (for Caldis Cook Architects);
Excelsior Hotel, Bridge Road – Glebe (Hotelier owner)
Bankstown Hotel, Old Town Centre Plaza – Bankstown (Hotelier owner)
Gardeners Inn, Great Western Highway – Blackheath (Mark Hurcum Design Practice);
Captain Cook Hotel, Botany Road – Botany (Cazac Constructions Pty Ltd)
Mascot Inn, Botany Road – Mascot (Robertson & Marks Architects)
Royal Hotel Paddington, Glenmore Road - Paddington (Hotelier owner)
Woolloomooloo Bay Hotel, Bourke Street - Woolloomooloo (Neustein Urban)
KB Hotel, 26 Foveaux Street - Surry Hills (Woodhouse & Danks Pty Limited)
Hydro Majestic Hotel – Medlow Bath (Space Architects)
Bar Cleveland, Cleveland Street – Surry Hills (Innersphere Pty Ltd)
Downtown Motel, 72 - 74 Crown Street- Wollongong (Prince Property Consulting)
Lake George Hotel - Bungedore (Fugen Constructions Pty Ltd)
Bondi Pavilion – Bondi (Waverley Council)
Glenmore, Mulgoa Road - Penrith (Askhour Pty Ltd)
Bondi Hotel, 178 Campbell Parade – Bondi (Robertson Marks Architects)
Airport Lodge, 1443 Botany Road – Botany (Hotelier owner)
The Glenroy Hotel, Botany Road - Alexandria (Bernard Young)
Coogee Bay Hotel, Arden Street – Coogee (Humphrey & Edwards Architects)
Railway Hotel, Cnr Joseph Street & Tooheys Lane – Lidcombe (Robertson Marks)
Boyles Hotel, 808 Old Princes Highway – Sutherland (Robertson Marks)
Bat & Ball Hotel, 495 Cleveland Street - Surry Hills (Owner/ Hotelier)
Royal Hotel, Corner Prouse Road & Cuthill Street – Randwick (Owner/ Hotelier)



Mortuary Station - Sydney



Haymarket Library – Sydney



Customs House – Circular Quay



Glenmore House & Farm – Mulgoa

HERITAGE ARCHITECTURAL ADVICE

HOTELS AND TOURISM HERITAGE PROJECTS CONTINUED

Base Backpackers, 469 & 477 Kent Street – Sydney (Base)
Royal Oak Hotel, 46 Railway Street – Lidcombe (Robertson Marks)
Warragamba Dam Conference Centre – Leppington (Owner/ Conference Centre)
Hotel Mosman, Military Road – Mosman (Owner/ Hotelier)
Ground Zero Hotel, Bigge Street – Liverpool (Owner/ Hotelier)
Golden Sheaf Hotel, New South Head Road – Double Bay (Woollahra Council)
Macquarie Hotel, Wentworth Street – Sydney (Owner/ Hotelier)
Duke of Gloucester Hotel – Randwick (Owner/ Hotelier)
Capitol Square; Karaoke Bar – Haymarket (Metro D Architects)
Huskisson Hotel, 75 Owen Street – Huskisson (Burley Katon Halliday Architects)
Coogee Bay Hotel, Arden Street – Coogee (Owner/ Hotelier)
Ravensthorpe, 52-56 Tongarra Road – Albion Park (Owner/ Restaurateur)
Gladesville RSL & Community Club, Linsley Street – Gladesville (Gladesville RSL)
Botany RSL, Botany Road – Botany (Botany RSL)
Nag’s Head Hotel – Glebe (Owner/ Hotelier)
Boronia House, Military Road – Mosman (Hotel Mosman)
The Gaff, Oxford Square – Darlinghurst (Doerfler Borg Architects)
Scruffy Murphy’s Hotel, Goulburn Street – Sydney (Owner/ Hotelier)
Beauchamp Hotel, Oxford Street – Darlinghurst (Owner/ Hotelier)

THEATRES AND STADIUM HERITAGE PROJECTS

Waverley Park Sports Pavilion - Waverley Oval (Waverley Council)
Plaza Theatre, River Street – Ballina (Ballina Shire Council)
The Marina Theatre – Rosebery (Maurice Beraldo Architect)
Salvation Army Hall, Goulburn Street – Sydney (Metro D Architect)
The Hub, King Street - Newtown (Maurice Beraldo Architect)
Bondi Pavilion

INDUSTRIAL HERITAGE PROJECTS

Briscoe Building, Wattle Street – Ultimo (Tony Owen Architect)
330 Wattle Street - Ultimo (Parsons and Bennett Architects)
Australia Street, Camperdown (Angel Mahchut Architects)
Dalgety Square, Wattle Street – Pyrmont
Railway Street – Wentworthville (Sak Emporium)
Fowler Road – Illawong (Havenview Homes)
Australian Broadcasting Corporation, Gore Hill (ABC)
Spectacle Island – Parramatta River (GHD)

RURAL HERITAGE PROJECTS

Belmont Estate – Muswellbrook (BHP Billiton)
Edderton Estate – Muswellbrook (BHP Billiton)
Edinglassie Estate – Muswellbrook (BHP Billiton)
Rous Lench – Muswellbrook (BHP Billiton)
Spring Farm Development - Spring farm (Lean & Hayward Pty Ltd)
St Aubins - Scone (Ask Lawyers)
Galvin Cottage - Spring farm (Owner/ Developer)
Hansens Road – Minto Heights (Owner/ Developer)



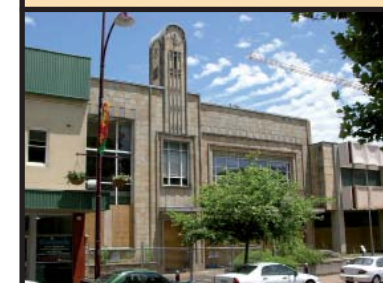
Simpson Cottage – Bundeena



Victoria Barracks – Paddington



House – Alison Road – Randwick



Former Council Bldg, Mann Street – Gosford

EXPERT WITNESS IN HERITAGE

RURAL HERITAGE PROJECTS CONTINUED

“Glenmore House & Farm” – Mulgoa (Thomson Adsett Architects)
Varroville House and Outbuildings – Campbelltown (Architectus)
Leichhardt Park – Leichhardt (Leichhardt Council)
Menangle Park West – Menangle (Harvest Scientific Services)
Bong Bong Common – Bowral (Micris Management Service)
Spring farm – Camden (Landcom)
SCEGGS – Moss Vale
Brush Farm Bowling Club, Marsden & Rutledge Road – Dundas (Owner/
Developer)

CONSERVATION MANAGEMENT PLANS

UTS Haberfield Sailing Club, Dobroyd Parade – Haberfield (GHD)
“Raith” Pine Avenue – Bradbury (State Property Authority)
Simpson Cottage, Simpson Road – Bundeena
KB Hotel, 26 Foveaux Street, Surry Hills (Woodhouse & Danks)
Liverpool Court House
Century Tavern, George Street – Sydney (Maurice Beraldo Architect)
Varroville House and Outbuildings – Campbelltown (Architectus)
Bong Bong Common – Bowral (Micris Management Service)
Soldier’s Memorial School of Arts – Liverpool (Liverpool City Council)
Station Masters Residence, Brompton Road – Bellambi (ADM Architects)
Cecil Hills Homestead – Cecil Hills (Liverpool City Council)
Uniting Church, Artarmon – Child Care Centre
Edinglassie – Muswellbrook (BHP Billington)
17 Maher Street – Hurstville (BHI Architects, Alexandria)
Dr Piri Centre, Bigge Street – Liverpool (Liverpool Council)
Paramount Studios, Brisbane street – Surry Hills (MTX Projects)
Base Backpackers, 469 Kent Street – Sydney (PTI Architects)
‘The Manse’ – The Avenue – Mt Druitt (Blacktown Council)

Captain Cook Hotel – Botany Road – Botany (Gale Street Pty Ltd)
‘Whiteley’ – Old Bury Road – Moss Vale (Owner)
Daily Telegraph Building, 147 King Street – Sydney (PCG Architects)
Spectacle Island – Parramatta River (GHD)
National Building, 250 Pitt Street – Sydney (PCG Architects)
Former Haymarket Post Office, 635 George Street – Sydney (Metro D)
Soul Pattinson Pharmacy, 160 Pitt Street – Sydney (PCG Architects)
631 George Street – Sydney (Metro D Architects)
Mortuary Station, Central – Sydney (State Rail Authority)
ABC Gore Hill Site (Australian Broadcasting Corporation)
Chief Mechanical Engineer’s Building – Eveleigh Railway Workshops (State
Rail Authority)
Central Railway Station – Sydney (Department of Public Works & Services)

APPOINTED HERITAGE ARCHITECT DURING CONSTRUCTION

The Gaff, Oxford Square – Darlinghurst (The Gaff)
Waver Residence, Carr Street – Waverton
The Hermitage, Pennant Ave – Denistone
Spotless – Housing NSW
Prince Alfred Park – Coronation Recreation Centre (Renato D’Ettorre)
Collingwood House, Birkdale Crescent – Liverpool (Liverpool City Council)
Customs House – Circular Quay (Mills Gorman Architect)
17 Maher Street – Hurstville (Owner/Client)
The Rocks Centre – The Rocks (Kane Construction)
Customs House, Ground Floor Restaurant – Circular Quay (Eastern Café
Custom House)
Royal Naval House, Grosvenor Place – Sydney (Cadence Australia)



North Reef Lighthouse – Great Barrier Reef



Glenmore House & Farm – Mulgoa



Houses at Bay St – Botany



Uniting Church – Artarmon

HERITAGE CONSTRUCTION ADVICE

APPOINTED HERITAGE ARCHITECT CONTINUED

Federation Hall, Grosvenor Place – Sydney (Cadence Australia)
Captain Cook Hotel, Botany Road – Botany (Gale Street Pty Ltd)
Paramount Studios, Brisbane street – Surry Hills (MTX Projects)
Capitol Square – Haymarket (Metro D Architects)
631 – 635 George Street – Sydney (Metro D Architects)
Daily Telegraph Building, 147 King Street – Sydney (PCG Architects)
RAAF Base, Richmond – Richmond (Meinhardt Engineers)
Soul Pattinson Pharmacy, 160 Pitt Street – Sydney (PCG Architects)
Dalgety Square – Refurbishment works (Tomaree Strata)
St Andrews Cathedral Sydney – Stonework (Paul Davies)
Tighes Hill TAFE – Newcastle (Belmadar Constructions)
Central Railway Station – Sydney (Department of Public Works & Services)
Pyrmont Bridge – Pyrmont (Howard Tanner & Associates)
Haymarket Library, Hay Street – Sydney (Howard Tanner & Associates)
Sydney Town Hall – Sydney (Howard Tanner & Associates)
St Johns College – Camperdown (Quinn O’Hanlon Architects)
Newcastle Town Hall – Newcastle

EXPERT WITNESS CASES IN LAND AND ENVIRONMENT COURT NSW

The Gaff, Oxford Square – Darlinghurst (The Gaff)
St Aubins, Scone (Ask Lawyers)
4 Moore Park Road – Paddington (Staunton Beattie Solicitors)
Telstra, Darling Street – Balmain (Blake Dawson Waldron)
57 Churchill Avenue – Strathfield (Houston Dearn O’Connor Lawyers)
30 Boyle Street – Balgowlah (Staunton Beattie Solicitors)
15-23 Knight Street – Erskineville (ASK Lawyers)
26 Albyn Street – Strathfield (Houston Dearn O’Connor Lawyers)
Meriton v Fairfield Council (Phillips Fox Lawyers)

Quong Tart, Arthur Street – Ashfield (Wiltshire Webb Lawyers)
23 Weldon Street – Burwood (Cameron Gillingham Boyd Solicitors)
10 Townson Street – Blakehurst (Blessington Judd Solicitors)
121 Macquarie Street – Sydney (Dobbs and Andrews Lawyers)
43 Wyralla Avenue – Epping (Greg Young client representing himself)
Ocean View Apartments – Bronte (Blessington Judd Solicitors)
Transport House, Macquarie Street – Sydney (Griffins Lawyers)
252 Abercrombie Street – Chippendale (Watkins Tapsell Lawyers)
Dalgety Square, Jones Street – Ultimo (Andreones Lawyers)
199 Pyrmont Road – Pyrmont (Andreones Lawyers)
Fletchers Construction – Blakehurst (ASK Lawyers)
Glebe Gardens - Hereford Street – Glebe (Andreones Lawyers)
Fisherman’s Village – Swan Bay (Blessington Judd Solicitors)
32-40 Gibbens Street – Camperdown (Bessington Judd Solicitors)
Doyle House, Bareena Street – Strathfield (Stephen Doyle Solicitor)
130 Bridge Street – Sydney (McCabe Terrill Lawyers)
19-85 Combles Parade – Matraville (Bessington Judd Solicitors)
Cnr Broke and McDonald Roads – Pokolbin (Andreones Lawyers)
23 Holbrook Avenue – Kirribilli (Collin Biggers & Paisley Lawyers)
1-17 Hough Street – Bondi Junction (Blessington Judd Solicitors)
Stimpy Enterprises – Fairfield (McCabes Lawyers)
19-21 Stanley Street – Sydney (Blessington Judd Solicitors)
24 Cottenham Avenue – Kensington (Blessington Judd Solicitors)
15 Echo Street – Cammeray (Taylor Kelso Solicitors)
108 Darling Street – Balmain (Taylor Kelso Lawyers)
107 McPherson Street – Bronte (Blessington Judd Solicitors)
34/38 North Street – Foster (Bessington Judd Solicitors)
849-855 George Street – Sydney (Blessington Judd Solicitors)
Haymarket Library – Sydney (Blake Dawson Waldron Lawyers)



Belmont Estate – Muswellbrook



House at Penkivil Street - Bondi



Court House - Wollongong



Officer’s Mess – RAAF, Glenbrook

MISSION STATEMENT

- *Rappoport is committed to the belief that development through responsible and educated control can achieve successful outcomes.*
- *Rappoport is committed to the protection and maintenance of cultural significance in our society.*
- *Rappoport is committed to a legislated balance between the private right to develop and the public interest in the conservation of heritage buildings and artefacts*
- *Rappoport is committed to the promotion of certainty in the heritage approval process.*
- *Rappoport is committed to the demystification of the heritage process and upholds non-subjective methods of assessing heritage impact. It has devised a unique system of assessment by means of which heritage impacts are accurately measured.*
- *Rappoport adopts the principle that development of heritage buildings must be tolerated and facilitated so long as the identified heritage significance of the project or building is not negatively affected.*

